

GALVA BUSINESS DIRECTORY

Galva is "home" to more than 25 businesses in and around town. Some of our Main Street businesses include, but are not limited to:

- Air Liquid
- American National Bank
- Computer Medics of NW Iowa
- Else Seeds
- Four All Seasons, LLC
- G & C's Full Service Station
- Galva Community Insurance
- Galva Holstein Ag, LLC
- Galva Public Library
- Galva Restaurant & Lounge
- Goettsch Trucking & Seed
- Hoops Trucking
- Larson Insurance
- Lone Star Welding Service
- Lumber Inn
- Main Street Styles
- Maple River Energy, LLC
- Midwest Seed Genetics
- Niemeier Construction
- Quad County Corn Processors
- Rod's Fertilizer & Sales
- Rural Waves Internet Service
- Schaffer Tax & Accounting Service
- Vogt Brothers Plumbing
- Zig's Automotive

Please support these fine businesses so that they can continue to thrive in rural Ida County.



Alan Bennett, President
1681 Market Avenue
Galva, IA 51020

Check Out GEDC on
www.Galvalowa.com

Galva Economic Development Corporation is a non-profit organization that is recognized by the IRS with 501(c)(3) Charity status. It is governed by an 8-member board and supports economic development and growth in and around Galva. If you would like to receive future communications from GEDC, please contact:

*Mrs. Rita Frahm, GEDC Secretary
311 East 2nd Street
Galva, IA 51020
Telephone: (712) 282-4646
Email: ritafrahm@heritageiowa.com*



POSTAL PATRON
GALVA, IA 51020

GALVA ECONOMIC DEVELOPMENT CORPORATION



January 2008

WHAT IS GEDC?

The Galva Economic Development Corporation (GEDC) is a non-profit organization that was formed in 1999 by a diverse group of community-minded individuals whose primary focus is to assist with economic development in and around Galva.

Some of the original "goals" of the GEDC were to:

- Stimulate growth and development of our business sector;
- Revitalize Main Street
- Acquire tract of land for new housing
- Promote existing businesses in Galva
- Develop an industrial park
- Support community wide events



Many of GEDC's goals have been achieved and significant progress has been made on other projects through the ongoing efforts of GEDC members. Here's just a couple examples:

Since 1999, Quad County Corn Processors (30 million gallon per year ethanol plant) and Air Liquid (dry ice plant formerly owned by Heller's Carbonics West) have moved into the industrial park south of town. Galva is the site of Ida County's first E85 retail fuel site. Currently, Maple River Energy is constructing a soybean crush plant and biodiesel manufacturing facility which should be in full operation by this summer.

A 13-acre housing division has been completed, and three young families call Galva, Iowa "home" today. New sidewalks have been constructed, and an electronic message center has been installed in front of the Galva Library. There's always something going on behind the scenes!

MEMBERSHIP IS FREE!

Current GEDC board members are:

Alan Bennett, President & Treasurer	classb@netllc.net	712-282-4608
Maureen Andresen, Vice President	mandresen@hotmail.com	712-282-4638
Rita Frahm, Secretary	ritafrahm@heritageiowa.com	712-282-4646

Other founding members include Randy Hustedt, Delayne Johnson, Anita Brandt, Rick Wiese, and Marty Boyle.

GEDC meets on a quarterly basis, and our group is always looking for enthusiastic people to help realize our mission of improving economic growth in Galva. If you would like to volunteer your time or talent, please contact one of the individuals listed above.

Inside this issue:

Our Vision for Galva	2
Grant Awards	2
Middle School Helpers	2
NEW Park Equipment	3
Spaghetti Supper	3
Leaving a Legacy	3
Business Directory	4

Galva Points of Interest

- City Park
- Liberty Park
- G-H Middle School
- Public Library
- Baseball and Softball Diamonds
- New Housing Subdivision

GALVA VISIONING COMMITTEE

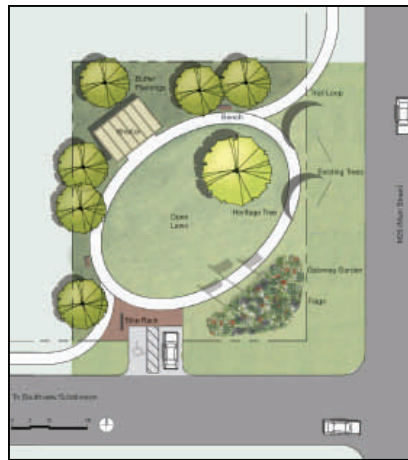
The City of Galva is one of 12 communities selected to participate in the 2006 Iowa's Living Roadways Community Visioning Program. Galva's Visioning Committee (GVC) is comprised of Larry and Rita Frahm, Karla Hustedt, LuAnn Bennett, Doug Andresen, Alan Goettsch, Judi Vondrak, Rod & Marlyns Brosamle, Duane & Joy Babcock, Stan Nading, and Paul & Steph Egger. The GVC identified a number of priority areas during the visioning process:

- Main Street—create a welcoming feeling along Main Street through the introduction of site furnishings, plantings, bump-outs, and façade improvements, etc.



- Signage—create an identity for Galva through the design of major entry signage
- Sidewalks and Trails—provide safe access between destinations within the City via sidewalks, especially between new housing, Middle School and Main Street
- Liberty Garden—provide a plan for this space to become a beautiful gateway into town
- City Park—improve existing playground equipment and succession of tree planting

The GVC is proud to report that many of our goals have been completed or are in process!



HARD WORK PAYS OFF!

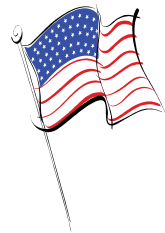
Galva was the first Ida County community to be selected to participate in the Visioning Program. This year long process provided board members with a clear picture of goals that Galva wanted to obtain. Based on that vision, various grants were submitted and awarded in 2007. We are delighted to report that funds were received from:

- Siouxland Community Foundation (\$1,000)
- Ida County Community Betterment Foundation (\$11,000)
- Paint Iowa Beautiful (\$225)
- Galva Holstein Ag, LLC (\$750)
- Midwest Industries (\$500)
- Farm Bureau Community Enhancement (\$560)
- NWREC Operation Round-Up (\$200)
- Galva Boosters (\$300)
- Mills Marketing (\$100)

- Mid American Energy (\$100)
- Kuehl & Payer Engineers (\$100)
- City of Galva (\$250)
- American National Bank (\$2,500)
- Heritage Bank, NA (\$2,500)
- Schaller Telephone Company (\$500)
- Thrivent Financial (\$900)

All of these funds were put toward expenses associated with water and electrical hook-ups, Liberty Garden start-up, park equipment, flower planters, park benches, bike stands, and the USA map stencil for elementary and middle school playgrounds.

We continue to research and apply for additional grant monies for future projects in Galva. Thanks to everyone who has donated the past 2 years!



Galva Holstein Middle School student council representatives participated in a community service project. The students (along with Principal Mike Richard, Karla Hustedt, and Larry Frahm) worked at the Liberty Garden mulching the newly planted trees & shrubs last fall. Thank you!

Alan Bennett, Larry Frahm, and Casey Woods work on placement of the 12' 6,600# planter delivered to the Liberty Garden in Galva. Thanks to Rod's Fertilizer for use of their equipment to make this delivery a reality.

WANT to be a kid again?!

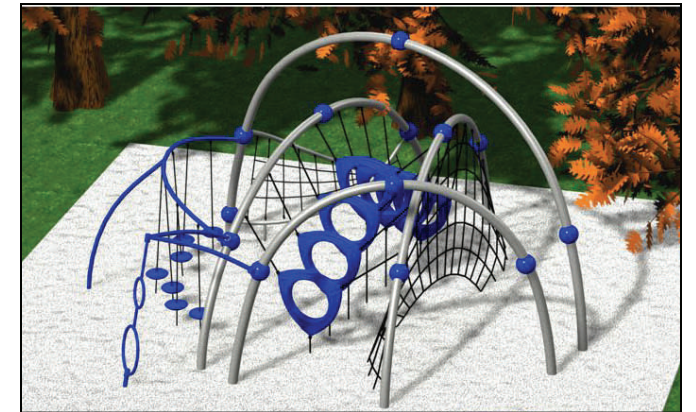
Welcome to the amazing world of Evos™! Evos™ playground equipment stops kids in their tracks. Where should they begin? Where's the end? With no prescribed entry or exit points, Evos™ leaves play routes to the child's imagination. Millions of outdoor play possibilities unfold for children ages 5 to 12+.

Evos™ offers more physical and mental challenges than traditional playground equipment. Kids balance (and counterbalance) and engage their upper bodies and core muscles as they navigate in every possible direction.

THANKS to private donations and grant monies received to date, the GVC and GEDC will be installing an Evos™ Landscape Structure in the City Park this spring!

The equipment shown here will be delivered in February and will be installed (weather permitting) at 9:00 a.m. on Saturday, March 29th. (Rain date is Saturday, April 5th.)

Please mark this date on your calendar and come help if you are available.



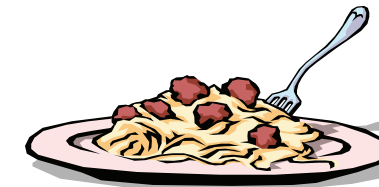
SUPPER'S READY!

Members of the GEDC and GVC will be hosting an *All-You-Can-Eat Spaghetti Supper* to raise funds for additions to Galva's Liberty Park and City Park. Our goal is to raise \$8,000 for the following projects:

- Installation of beautiful walking paths and flag poles at the Liberty Park in South View Addition
- New playground equipment at the City Park

Please join us for supper on Sunday evening, January 27th from 5:00 p.m. to 7:00 p.m. at the Middle School in Galva.

Free will donations are being accepted for the meal.



If you cannot attend, but would like to donate, simply send your donation to GEDC c/o Rita Frahm or Alan Bennett.

Matching funds for this event (up to \$500) will be available through Thrivent Financial. Thanks for your continued support!

P.S. If you have a couple bags of pop cans taking up space in the garage, this would be a great night to bring them to town!

POP CAN DRIVE

The Galva Park Fund accepts aluminum cans 365 days a year. Please drop bags of cans in the cage on the east side of Main Street. Need us to pick them up? Give us a call and we will gladly stop by your home or business! All proceeds go directly to the Galva Park Fund. THANKS!

NEED A CHANGE?

Northwest Iowa is in need of hard working employees, like you! Career opportunities are available in manufacturing, renewable energy, bioscience, agriculture, health care, technical and a host of other fields. Our growing businesses have openings from entry to executive levels and are searching for great personalities!

Galva has a lot to offer! This friendly community has wonderful neighborhoods, churches, and schools. Homes are very affordable, and we are close to hospitals, shopping and cultural events!

Galva has several commercial buildings on Main Street for sale or rent that could be a prime location for your new or existing business. The possibilities are endless!

For more info, contact Rita Frahm at 712-282-4646 or ritafrahm@heritageiowa.com. Got a couple extra minutes today? Check out this website:

www.idacounty.org/e-newsletters/wia.htm

Looking for a career change? Check out Galva, Iowa!

LEAVING A LEGACY



As you begin to think about 2008 estate planning or gift giving, please consider donating a portion of the proceeds to GEDC. Memorials can be made for specific items such as park benches, planters, or flower gardens for your loved ones. Also, we gladly accept grain or stock donations year round, if you are so inclined.

All charitable contributions are tax deductible. Help us continue to improve Galva for your children and grandchildren! Monetary donations can be forwarded to GEDC c/o American National Bank, Galva, IA 51020.

Questions? Feel free to contact Rita Frahm at 712-282-4646 or via email at ritafrahm@heritageiowa.com.